

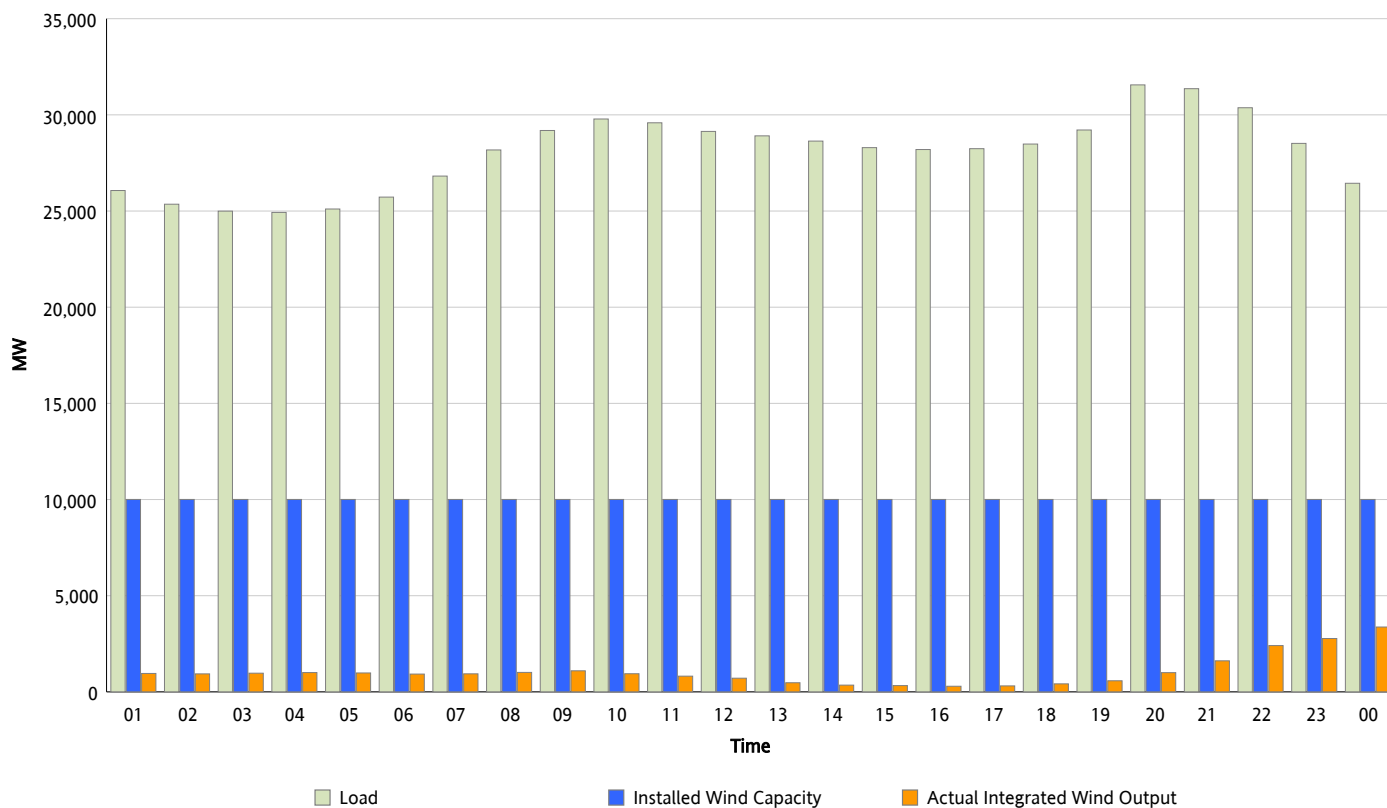


## ERCOT Grid Operations

### Wind Integration Report : 10/28/2012

Peak Load	31,560 MW
Load Peak Hour (HE)	20
Wind Over Peak	1,000 MW
Wind Record 06/19/12	8,368 MW
Max Wind Value*	3,619 MW
Wind Peak Time	23:53
Wind Integration %	14.05 %

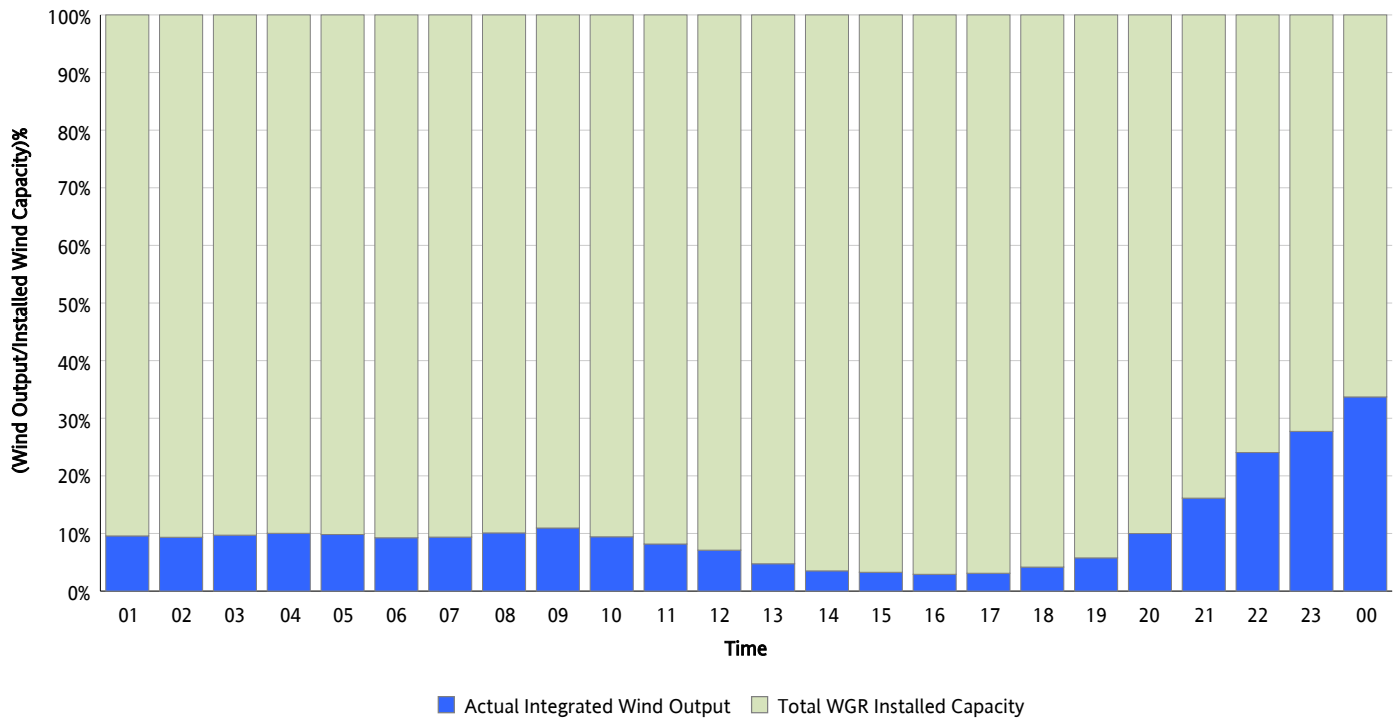
**Hourly Average Actual Load vs. Actual Wind Output**  
**10/28/2012**



*\* Wind Record and Wind Max represent instantaneous values and the rest of the values are integrated over the hour*

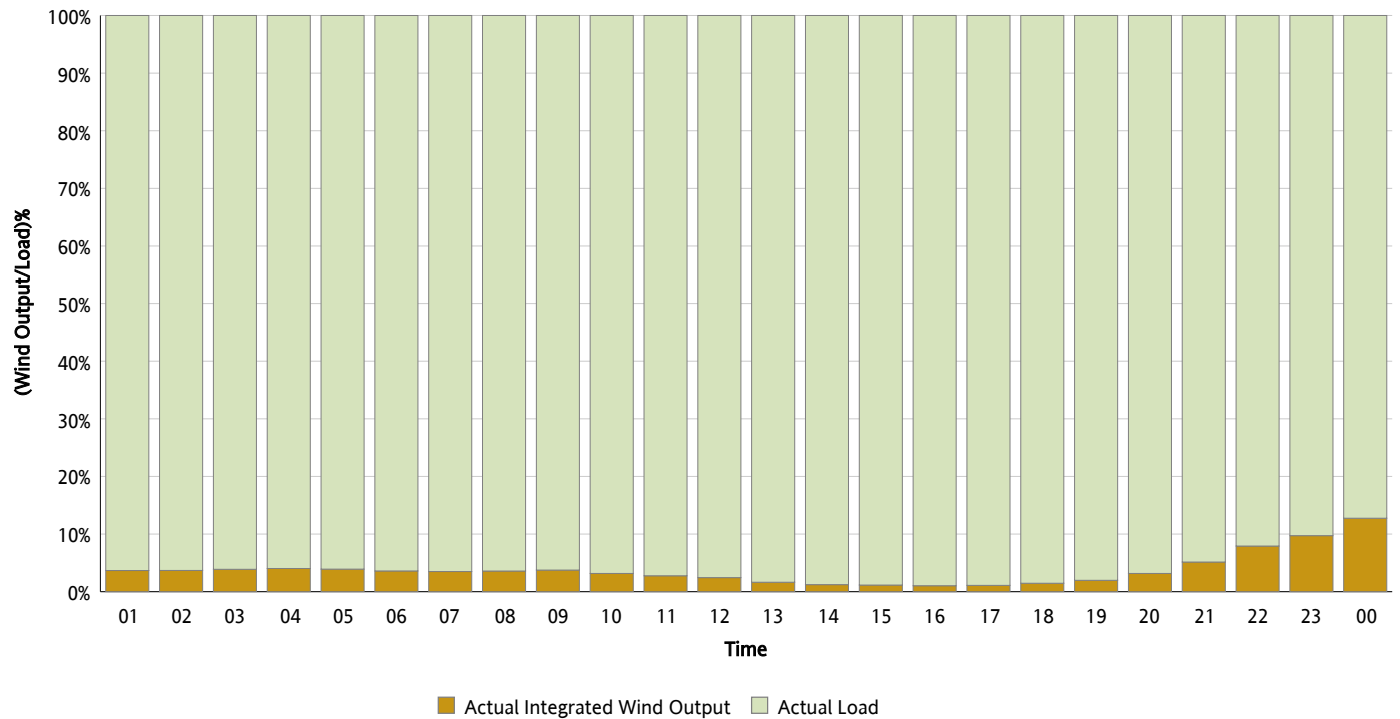
## Actual Wind Output as a Percentage of the Total Installed Wind Capacity

10/28/2012



## Actual Wind Output as a Percentage of the ERCOT Load

10/28/2012



## ERCOT Load vs. Actual Wind Output

10/21/2012 - 10/28/2012

